

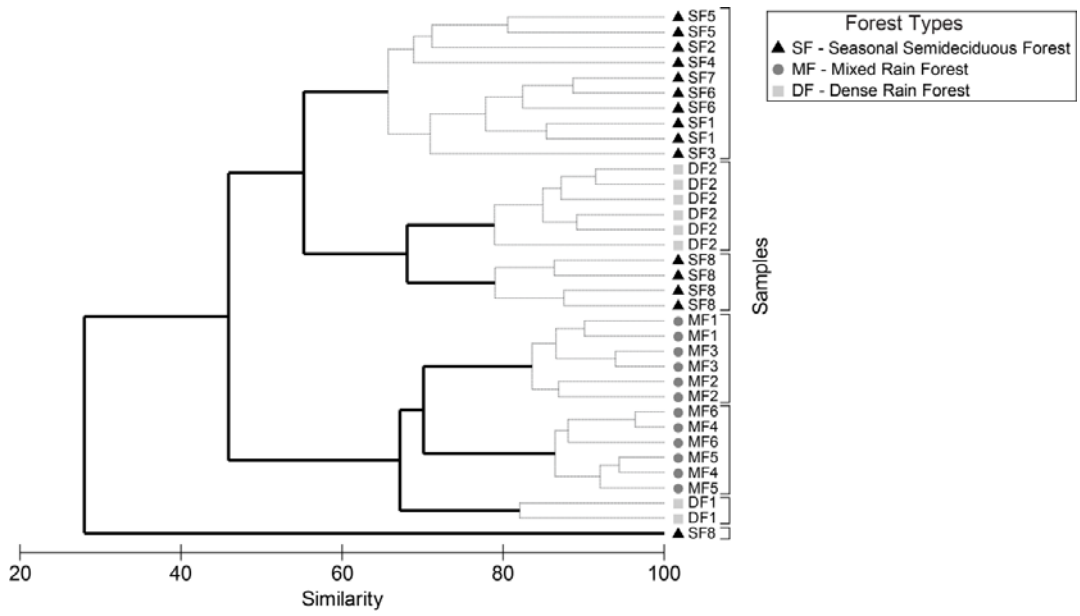
Supplemental material:

Appendix Table A1: Studied locations (names in Portuguese) in the Brazilian Atlantic rainforest organized by forest type and with information on their total size (ha). For each location is informed coordinates and altitude (meters) of the sampled sites.

Forest type/Locations	Total Size	Sites	Coordinates	Altitude
Seasonal semi-deciduous forest:				
SF1 (Parque Estadual Mata dos Godoy)	1,500	Site 1	23°26'37''S, 51°15'76''W	650
		Site 2	23°26'36''S, 51°15'44''W	640
SF2 (Parque Estadual de São Camilo)	385	Site 1	24°18'47''S, 53°54'58''W	340
SF3 (Parque Estadual de São Francisco)	876	Site 1	23°09'37''S, 50°34'00''W	530
SF4 (Parque Estadual do Lago Azul)	1,750	Site 1	24°06'13''S, 52°19'08''W	630
SF5 (Fazenda Colorado)	564	Site 1	23°28'13''S 51°02'59''W	530
		Site 2	23°28'18''S 51°02'21''W	540
SF6 (Patrimônio Paiquerê)	577	Site 1	23°29'37''S 51°06'02''W	520
		Site 2	23°30'07''S 51°04'35''W	550
SF7 (Mata do Cissi)	387	Site 1	23°23'41''S, 51°00'55''W	450
SF8 (Parque Nacional do Iguaçu)	185,000	Site 1	25°36'53''S, 54°26'08''W	210
		Site 2	25°36'16''S 54°25'01''W	260
		Site 3	25°07'48''S, 53°49'15''W	690
		Site 4	25°07'52''S 53°49'81''W	640
		Site 5	25°14'34''S 53°50'49''W	509
Dense rain forest:				
DF1 (Mananciais)	800	Site 1	25°26'32''S, 48°58'59''W	939
		Site 2	25°26'36''S, 48°59'22''W	990
DF2 (Área de Preservação Ambiental de Guaraqueçaba)	192,000	Site 1	25°14'31''S, 48°38'25''W	690
		Site 2	25°14'21''S, 48°37'56''W	613
		Site 3	25°19'15''S, 48°40'35''W	31
		Site 4	25°19'53''S, 48°40'19''W	115

		Site 5	25°23'25''S, 48°40'20''W	12
		Site 6	25°23'28''S, 48°40'14''W	26
Mixed rain forest:				
MF1 (Reserva do Patrimônio Natural do Tarumã)	840	Site 1	25°18'12''S, 49°48'53''W	930
		Site 2	25°18'05''S, 49°48'11''W	970
MF2 (Parque Ecológico da Klabin)	1,000	Site 1	24°21'02''S, 50°34'11''W	772
		Site 2	24°20'55''S, 50°34'33''W	765
MF3 (Floresta Nacional de Irati)	3,500	Site 1	25°22'48''S, 50°35'04''W	840
		Site 2	25°23'74''S, 50°34'96''W	871
MF4 (Estrada do Corvo Branco)	1,000	Site 1	28°02'35''S, 49°22'57''W	1031
		Site 2	28°02'20''S, 49°22'52''W	1078
MF5 (Distrito de São José)	1,500	Site 1	28°01'10''S, 49°27'33''W	981
		Site 2	28°01'30''S, 49°27'46''W	1040
MF6 (Pousada Panelão)	1,800	Site 1	27°53'16''S, 49°35'58''W	1118
		Site 2	27°52'57''S, 49°35'40''W	1032

---



Appendix Figure A1: Dendrogram arising from group-average linking and the SIMPROF test of the bird species assemblages in the sites across the forest types; solid black lines indicate significant group structure at the 5% level.

Appendix Figure A2. Species which were recorded six times or less during the study. For each species we indicate the number of records in each forest type: seasonal semi-deciduous forest (SF), dense rain forest (DF), and mixed rain forest (MF).

Family Thamnophilidae: *Mackenziaena leachii*(SF = 1, DF = 1, MF = 1); *Thamnophilus doliatus*(SF = 3), *Thamnophilus ruficapillus*(MF = 6); *Rhopias unicolor*(DF = 3); *Dryophila ferruginea*(SF = 1, DF = 3); *Dryophila rubricollis*(MF = 4); *Dryophila squamata*(SF = 1, DF = 4); *Terenura maculata*(SF = 2); *Myrmeciza squamosa*(SF = 1, DF = 3). Family Conopophagidae: *Conopophaga melanops*(SF = 1, DF = 2). Family Rhinocryptidae: *Psilorhamphus guttatus*(SF = 2). Family Formicariidae: *Formicarius colma*(SF = 1, DF = 3, MF = 1); *Chamaeza meruloides*(SF = 1; DF = 1). Family Furnariidae: *Campylorhamphus falcularius*(DF = 1 MF = 4); *Lepidocolaptes angustirostris*(SF = 3); *Cichlocolaptes leucophrus*(SF = 1, DF = 3); *Clibanornis dendrocolaptoides*(SF = 1; MF = 2); *Leptasthenura striolata*(MF = 1); *Cranioleuca obsoleta* (SF = 1; MF = 2); *Synallaxis spixi*(SF = 2); *Synallaxis frontalis*(SF = 1).