

Taxon: *Tupaia belangeri*

Age: 1 days

Specimen: 12-17-01A

Combined



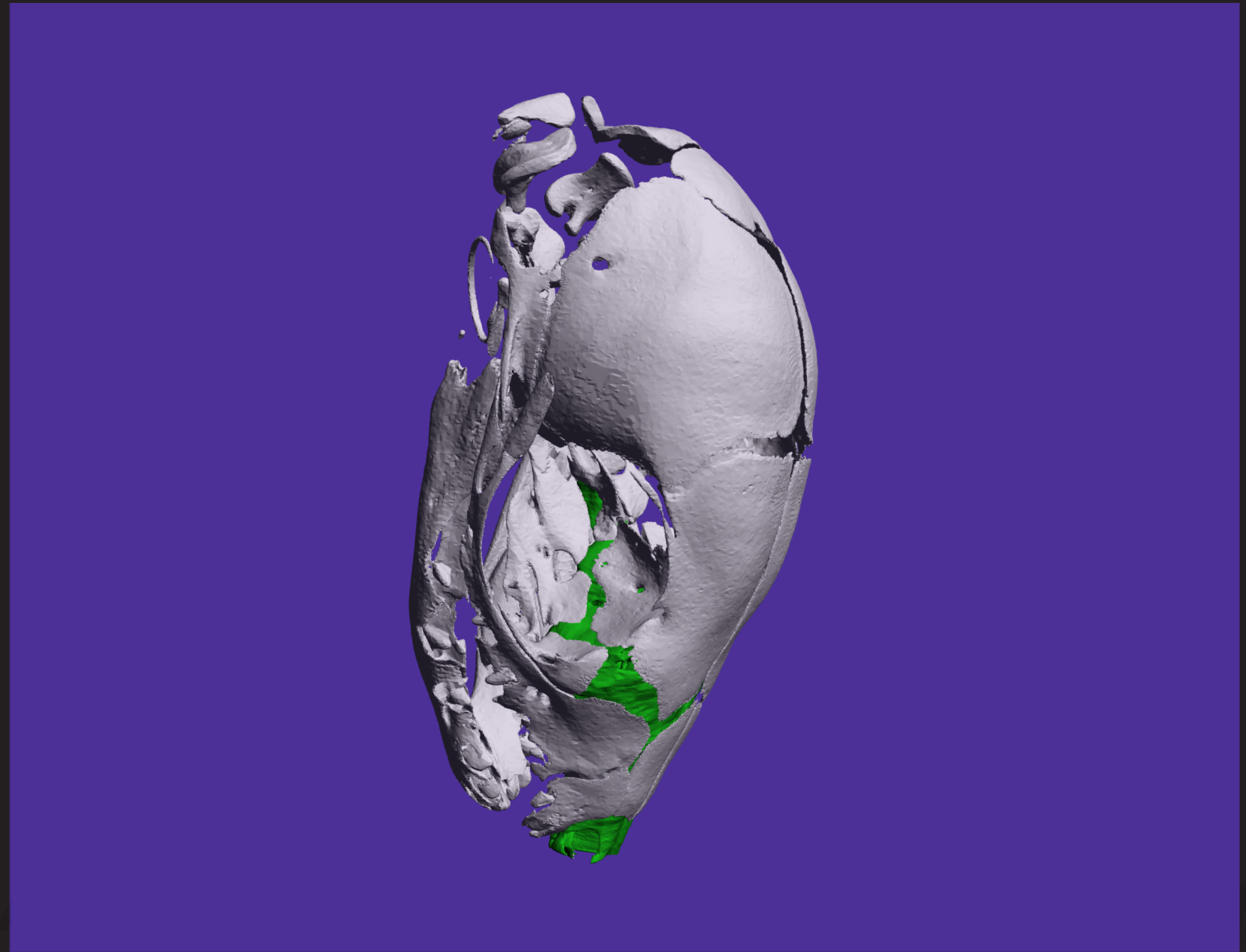
Skull



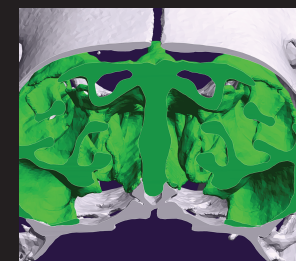
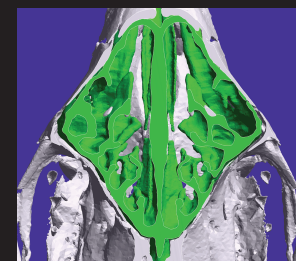
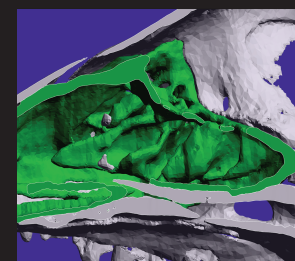
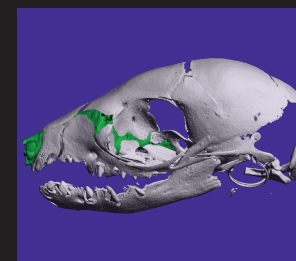
Nasal cartilage



Atlas of Primate Skeletal Growth



Funding provided by:
BCS-1830894, BCS-1830919,
BCS-1728263, BCS-1231717,
BCS-1231350, BCS-0959438



Viewer Controls

Rotate: Left-click

Pan: Ctrl + Left click

Zoom: Shift + Left click